



LARKRISE PRIMARY SCHOOL

Dorset Avenue, Gt. Baddow, Chelmsford, CM2 9UB

Tel: (01245) 471654

e-mail admin@larkrise.essex.sch.uk

Headteacher: Ms Katie Allen

Learning Together - Achieving Excellence



24th October 2025

Dear Families

We had a double dose of Parent Consultation Meetings this week. Thank you to everyone that came. It is very important that we work together for the benefit of the children. I hope you heard good things and some things that you can help your child to improve on as the year continues. We all want the best from the children so if we work together, they will do better.

Please let anyone who is looking for a school for their little one know that we are holding tours of the school in the next few months.

Tours are available on;

Tuesday 18th November at 9.30am

Monday 8th December at 1.30pm

Tuesday 13th January at 9.30am

Please spread the word!

KEY PRIORITIES FOR THIS YEAR

Every year the school senior leadership team, in partnership with the Executive leadership team of the Trust, work together to formulate a school development plan that focuses the school priorities for the year ahead. I thought you might like to know what we are working on as a school this year:

Key Priorities for 2025 -2026

To enhance pupil engagement and pupil outcomes by making learning more experiential and relevant to real life.

To ensure all teachers consistently challenge poor-quality work and raise expectations of pupils' outcomes.

To embed high-quality assessment practices led by subject leaders to evaluate pupil progress.

To strengthen the strategic role of subject leaders in driving curriculum intent, implementation, and impact.

To strengthen assessment for learning to accurately identify next steps and accelerate progress in EYFS.

To improve standards of reading and writing in EYFS.

To build and establish a KS2 nurture cabin.

If you have any questions about any of these, or any ideas, please do let us know.

UNIFORM CONSULTATION

You will have received a letter asking for your views on the introduction of a blue tie and white shirt to our school uniform, in place of our blue polo shirts. Thank you to all who have sent in their views so far. There is still time to let us know your thoughts so please do dojo or email the office. I will be closing this on Friday 7th November so please do let us know your thoughts. Thank you.

YEAR 6 TO 7 SECONDARY ADMISSION ROUND FOR SEPTEMBER 2026

As you may be aware, the new secondary school admission round opened on Friday, 12 September 2025, for parents of current Year 6 children to apply for a secondary school (Year 7) place for September 2026.

The statutory national closing date for applications is 31 October 2025.

Applications can be made online via www.essex.gov.uk/admissions. 99% of parents in Essex applied online last year.

All of the application information is available on the website above.

The website also has a copy of the Secondary Education in Essex 2026-27 booklet which contains details of all secondary school admission policies.

SAFEGUARDING ALERT

We want to make you aware of an issue affecting some popular children's books by Andrew Cope, including the Spy Dogs, Spy Cats, and Spy Pups series.

Some editions of these books include a printed web address at the back that used to go to the author's website. This link has been compromised and is no longer within his control. The website now connects to inappropriate adult content.

The publisher, Puffin, has paused sales and distribution of the books and is working with schools, libraries, and retailers to remove copies from circulation. They have stressed that the website has no connection to the author or publisher.

What this means for you:

- If your child has any Spy Dog, Spy Cat or Spy Pups books at home, please check the back for website links and make sure they do not try to visit the site.
- It is safe for children to continue reading the stories themselves — the concern is only with the outdated link.
- You can also talk with your child about the importance of not following web addresses in any children's reading materials without checking with an adult first.

Thank you for your support with this.

DOJO/PHONE CALLS FOR TEACHERS

Just a reminder that dojos and phone calls to parents from and to class teachers can only happen when the teacher is NOT TEACHING. We are happy for you to send messages via dojo at any time, but please do not expect immediate answers or phone calls back when teachers are teaching the children. If you have an emergency, then please leave a message with the office staff and they will find an adult who can respond more immediately if it is needed. Thank you for your understanding.

ARBOR

Arbor is now working. Please can you make payments for your child's dinner arrears for last year and for the start of term. A polite reminder that all meals must be paid for in advance.

SCHOOL DINNER MENUS

Our new winter menus can now be found on the school website.

COLLECTION OF CHILDREN FROM THE PLAYGROUND

For parents of year 2 – 6 who collect their children from the top playground, please can you stand back and away from the pathway leading up to the playground. We do need access to allow the classes to get to their circles so that the teachers can easily dismiss the children to you. Thank you for your co-operation.

FACEBOOK

Please have a look at our Facebook page where we try to upload photos from each of the classes across the school weekly to share what we have all been up to. Please like and comment too!

CONSEQUENCES

We have had an increasing number of children who are choosing to hurt others during break and lunchtimes. Some of the children tell us that their parents tell them to hit back if they are hit first. This is not the way that we want our pupils to conduct themselves at Larkrise. Often, we find that the initial 'hit' was actually an accident but children are lashing out first before finding out what has happened. We want our children to respond with curiosity and kindness first. When children do hit others, I want to be clear to you that there will be consequences. This may be in the form of missing play or missing lunch play, being directed to another classroom to do their learning, or a conversation with parents. We are preparing our children to be adults in a world where there are much harsher, more serious consequences for choosing the wrong actions. Thank you for your co-operation.

TV OPPORTUNITY

My name is Frankie Mensah & I am the Casting Executive at BAFTA award winning Expectation Television, makers of Clarkson's Farm on Amazon Prime, Miracles on Sky Max & Alma's Not Normal BBC 2. <https://www.expectationtv.com/>

We are looking for confident kids aged 9-11yrs and their parents for a new non-broadcast pilot "The Big Adventure" a funny, feel-good series that challenges a group of kids to navigate their way home unsupervised.

Do your kids spend most of their time in the online world?

Are you an over protective parent but think it's now time for your child to learn life skills and have an adventure of a lifetime?

If you are interested and want to hear more get in touch below!

If anyone is interested in getting in touch, they can email us at:

kidsadventureshow@expectationtv.com

Best wishes,

The Kids Adventure Show (working title) Team

Frankie Mensah

Casting Executive

Please see below on behalf of the Mid Essex Start Well group

"Got a little one under 5? These free drop-in events are for you! Friendly faces, expert advice, and fun activities – just turn up and see what's on offer!"

This October, families across Mid Essex (Chelmsford, Braintree, Maldon, Dengie & Witham) are invited to attend the **Start Well Roadshows** – a series of free, drop-in events designed to support parents and carers of children under 5.

Families will find expert advice, peer support, and fun activities for little ones – all in a relaxed, welcoming environment. Whether they're preparing for pre-school or just looking for a bit of support, there's something for everyone.

📍 Locations include libraries and family hubs across Mid Essex.

📅 No need to book – just turn up!

👉 [Click here for dates and details](#)

If you have any questions, please don't hesitate to email C&Fpartnershipleads@essex.gov.uk

All the best,

Mid Essex Start Well partners

BIKES AND SCOOTERS

Bikes and scooters MUST NOT be used on the playground at the end of the school day or in the old KS1 playground at the front of school before school starts. Please ensure when you are collecting bikes and scooters that they are not used until you leave the school premises, and if your child is arriving to school on a bike or a scooter, they dismount and hold their bike until it is time to enter the premises. This is to avoid collisions and injuries. Many thanks.

PARKING

Can parents please be mindful of where they are parking to drop off and collect children at the start and end of the school day. We have residents and resident only parking in several places around the school and we have already received several complaints. Our neighbours have not been able to access their parking spots or their cars, and parents have been particularly rude to them. Please show some kindness and responsibility and park your car in a sensible place if you do indeed need to bring your car. Thank you for your understanding.

DIARY DATES

Friday 24 th October	Last day of term
Monday 27 – Friday 31 October	HALF TERM
Monday 3 rd November	Return to school
Monday 10 th November	Flu Immunisation Day
Friday 21 st November	EYFS WOW Day – Rainbow Robin’s Birthday!
Thursday 4 th December	Y5 WOW Day – Wildlife Conservation Day
Friday 5 th December	Y1 WOW Day
Friday 5 th December	Y2 WOW Day – Lonely Beast welcome home party
Wednesday 10 th December	Y6 Class Assembly at 2.45pm
Monday 15 th December	Y4 WOW Day – Sewing Christmas decorations
Monday 15 th December	2.30pm IRock concert for parents of children who do IRock only
Thursday 18 th December	Christmas lunch and Christmas jumper day
Friday 19 th December	Last day of term
Monday 22 nd Dec – Tues 6 th Jan	Christmas Holidays
Monday 5th January	INSET Day – School closed to children

I ROCK

We have a new band coach, Ben, and he will be coaching on a Monday afternoon. If you are interested in your child joining IRock to play the drums, the keyboard, the guitar, or sing, please do let us know or contact IRock at info@irockschool.com or phone 0330 1742655. Their website is www.irockschool.com if you would like to find out more.

FOLS NEWS

Thank you to everyone who purchased Temporary Tattoos and the Halloween competition sheets. We had some great entries this year. The winners were announced today.

FOLS Non uniform day

A big thank you for all the donations for our Rainbow Raffle today, it is much appreciated. The rainbow boxes are looking great. Photos from each class box will be sent out soon.

AGM - Details & date to follow

If anyone has any ideas for events or raising funds for the children and school, please do let us know. We are open to all ideas and any new ideas for events that you or the children may have.

If anyone would like to volunteer to help the FOLS team, please get in contact. The more people we have on board the more events we can put on.

Contact details - familiesoflarkrise@hotmail.com
 Facebook page - Families and friends of Larkrise Primary School,
 Classlist or alternatively, look out for us on the KS2 playground.

Thank you to everyone for supporting us and we hope you all have a lovely half term break.

The FOLS Team



	Monday	Tuesday	Wednesday	Thursday	Friday
9 -10 am	Pre-loved uniform shop open (Cash only)		Coffee morning Pre-loved uniform shop open (Cash only)	Pre-loved uniform shop open (Cash only)	
10 – 12am	Mel available for 1:1 conversations		Mel available for 1:1 conversations	Mel available for 1:1 conversations	
1 – 4pm	Mel available for 1:1 conversations		Mel available for 1:1 conversations	Mel available for 1:1 conversations	

1:1 conversations – I am always happy to talk to parents 1:1. Where possible, can you text me for 1:1 conversations so I can ensure my availability, however, if something unexpected has happened and you need to talk about it on the day, please don't hesitate to contact me.

Mel Pointon, Child and Family Support Worker, will be available in 'The Hive,' our parent hub which is in the bungalow situated on the school driveway, every Monday, Wednesday and Thursday to meet with parents and carers. This is also where our pre-loved uniform is available for a small fee. Please feel free to go across on any of these days and Mel will help you out. Mel can also issue food bank vouchers should you need them. Mel can also be contacted on [079562111932](tel:079562111932).

PHILOSOPHY FOR CHILDREN

Our 'P4C question of the week' that we'd like you and your children to discuss is this: 'Would you rather be at school or be on holiday?'

The important thing to ask is 'why?' Do let us know what you and your children discuss.

FAMILY FRIDAY

Parents and carers are welcome to come into school at 8.40am **every Friday**, alongside their child, to read in their classroom. We will do this **EVERY Friday** so please do come along and join in. If children see us working together, they will do so much better in their learning! Please do come in, if only for 10 minutes! Younger siblings are welcome to come too as long as you keep them close to you whilst reading. We ask you all to have left the classroom by 9am so the children can then proceed with their class learning.

ATTENDANCE NEWS

Attendance was a reason that Larkrise did not reach the 'outstanding' grade from Ofsted last year. There are too many families who fall under the 90% attendance bracket and are so deemed to be 'persistently absent'. Children should be attending school every day. Your child can only miss school if they are too ill to attend or school have given advance permission. Can you please ensure you contact the school office to explain any absence from your child **on the day they are going to be absent before 9am**. The national attendance target is **95%** and we would really like to achieve that this year.

I have added an attendance mountain poster to the bottom of the newsletter this week and will be adding more over the coming weeks. Attendance is so important to the success of your child. Please have a look and reflect on what your child's attendance has been like so far this year and how you might be able to improve it. I have also added some advice on childhood illnesses from ECC.

Reception –	79.2%
Year 1 –	89.1%
Year 2 –	98.8%
Year 3 –	92.3%
Year 4 –	93.6%
Year 5 –	87.1%
Year 6 –	97.9%

CERTIFICATES

Class	Stars of the Week	Mathematician of the Week
Reception (EYFS)	Bailey, Ayaz	Saikrish
Year 1	Jasmine, Aadhya	Florence
Year 2	Alfie, Bowie	Haneen
Year 3	Dominic, Fletcher and the whole class	Tyler
Year 4	Oscar, Saima	Sahil
Year 5	Aman, Tommy A	Ishaq
Year 6	Dottie, Alice, Rorie	Libby

BIRTHDAYS

A very happy birthday to the following children for this week and over the holidays:

Johnson, Dottie, Bailey, Eva, Aaron, Aria

Many happy returns!

Have a lovely, restful weekend and a wonderful half term.

L. Allen

Ms Allen
Headteacher
Larkrise Primary School

What to do

Advice on childhood illnesses



Go to school; if needed, get treatment as required



Some restrictions for school attendance



Don't go to school and see the GP

What it's called?	What it's like	Going to school	Getting treatment	More advice
Asthma flare up	Worsening of usual symptoms		Follow your care plan	Stay off school if feeling too unwell
Chicken pox	Rash begins as small, red, flat spots that develop into itchy fluid-filled blisters		Pharmacy	Back to school five days after on-set of the rash, or when all lesions are crusted over
Common cold	Runny nose, sneezing, sore throat		Pharmacy	Ensure good hand hygiene
Conjunctivitis	Teary, red, itchy, painful eye(s)		Pharmacy	Try not to touch eye to avoid spreading*
Flu	Fever, cough, sneezing, runny nose, headache, body aches and pain, exhaustion, sore throat		Pharmacy	Ensure good hand hygiene*
German measles/ Rubella	Fever, tiredness. Raised, red, rash that starts on the face and spreads downwards		GP	Back to school four days after the rash has started, if feeling well enough. Please let the school know, as pregnant members of staff may be affected.
Glandular fever	High temperature, swollen glands, sore throat; usually more painful than any before		GP	*
Hand, foot & mouth disease	Fever, sore throat, headache, small painful blisters inside the mouth on tongue and gums (may appear on hands and feet)		GP	Attend school while monitoring symptoms
Head lice	Itchy scalp (may be worse at night)		Pharmacy	
Impetigo	Clusters of red bumps or blisters surrounded by area of redness		GP	Back to school when lesions crust or 48 hours after start of antibiotics
Measles	Fever, cough, runny nose, watery inflamed eyes, rash		GP	Back to school four days from on-set of rash, and if feeling well enough
Ringworm	Red ring shaped rash, may be itchy, rash may be dry and scaly or wet and crusty		Pharmacy	
Scabies	Itching rash, commonly between fingers, wrists, elbows, arm		GP	Back to school after first treatment
Scarlet fever	Fever, unwell, red tongue, sandpaper rash		GP	Exclusion period during first 24 hours of antibiotics*
Shingles	Pain, itching, or tingling along the affected nerve pathway. Blister-type rash		GP	Only stay off school if rash is weeping and cannot be covered
Sickness bug/ diarrhoea	Stomach cramps, nausea, vomiting and diarrhoea		Pharmacy	Contact GP if symptoms persist after 48 hours
Threadworms	Intense itchiness around anus		Pharmacy	Ensure good hand hygiene
Tonsillitis/ Strep throat	Intense sore throat for more than 1 day		Pharmacy	See GP if temperature lasts more than 48 hours or cannot swallow. Only need to stay off school if feeling too unwell
Whooping cough	Violent coughing, with a 'whoop'		GP	Exclusion period during first five days of antibiotics
Covid				Visit www.nhs.uk for latest guidance

*Attend school while monitoring symptoms.

This information is a guide and has been checked by health professionals. If you are unsure about your child's wellbeing, we recommend you contact your pharmacy or GP to check.

Working in partnership with

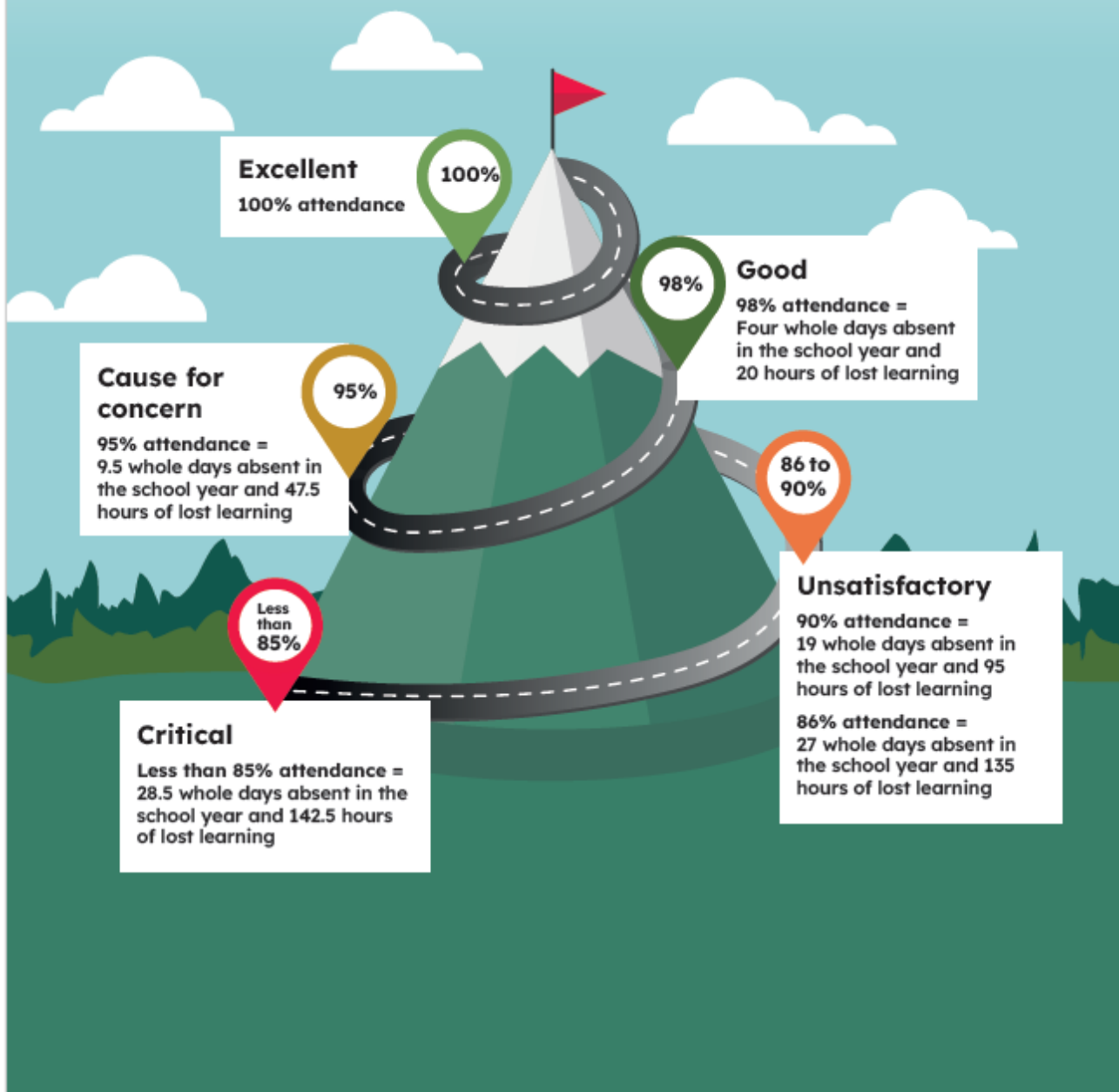
Should my child go to school/nursery today?

Hertfordshire and West Essex Healthier Together for further information

<https://www.hwehealthier.together.nhs.uk/parentscarers>



Where does your child sit on the attendance mountain?



WE ACCEPT CHILDCARE
VOUCHERS & OFFER
TAX-FREE CHILDCARE!

MEGA CAMPS

KIDS DAY ACTIVITY CAMPS

CHILDCARE FROM
8am - 6pm

AGES
4 - 14



OCTOBER CAMP 2025

AT ALL LOCATIONS - CHECK WEBSITE FOR DATES

FENCING



KIDS
FAVOURITE

FANCY DRESS



INFLATABLE FOOT DARTS



ANIMAL WORKSHOP



DIFFERENT MEGA ACTIVITIES, ARTS & CRAFTS AND
SPORTS AVAILABLE EACH DAY

MULTIPLE LOCATIONS THROUGHOUT
ESSEX, KENT & SURREY THIS OCTOBER

CHECK WEBSITE FOR LOCATIONS & DATES



Ofsted
Registered

BOOK ONLINE NOW!
WWW.MEGACAMPS.NET
OR CALL 0333 012 4378

ALL OUR
STAFF ARE

